

Top Stories This Week

- July GSM Data Bharti Airtel Added 5.10 Lakh Users Vs 10.1 Lakh Users (MoM). Idea Cellular Added 11 Lakh Users Vs 12.9 Lakh Users (MoM).
- Reliance Capital Q1 Cons Net Profit At Rs 164 Cr Vs Rs 133 Cr (YoY). Cons Total Income At Rs 2,138 Cr Vs Rs 1,930 Cr (YoY).
- Rel Comm Q1 Cons Net Profit At Rs 132 Cr Vs Rs 156 Cr (QoQ).
- Government aims to hire bankers for ONGC stake sale by August-end.
- Adani group will soon start work on expansion of Dhamra port to take the port's capacity to 100 mtpa from 25 mtpa now.
- IOC Plans to set up another LNG terminal on the eastern coast.
- Foreign Investment Promotion Board (FIPB) may take up HDFC Bank 's FDI proposal in next meeting.
- Zee Entertainment to replace United Spirits in CNX Nifty w.e.f September 19.
- DLF plans to reduce its debt to Rs 12000-14000 crore by FY17.
- Jet Airways management seeks 1 month to take decision on outstanding.

Weekly Indices Change

Index	Close	P. Close	Chg. (%)
SENSEX	26419	26103	1.21
NIFTY	7913	7791	1.57
MIDCAP	9340	9007	3.70
SMLCAP	10298	9824	4.82
METAL	12849	12775	0.58
OIL&GAS	11081	10854	2.09
AUTO	17034	16348	4.20
TECK	5538	5495	0.78
BANKEKX	18100	17251	4.92
IT	9948	9874	0.75
FMCG	7169	7265	-1.32
HC	13189	12524	5.31
PSU	8171	7896	3.48
CD	9131	8648	5.59
POWER	2105	2061	2.13
CG	14874	14333	3.77
REALTY	1822	1808	0.77

Global Indices

DOW	17001	16662	2.03
NASDAQ	4538	4464	1.66
FTSE	6775	6689	1.29
NIKKEI	15539	15328	1.38
HANGSENG	25112	24666	1.81

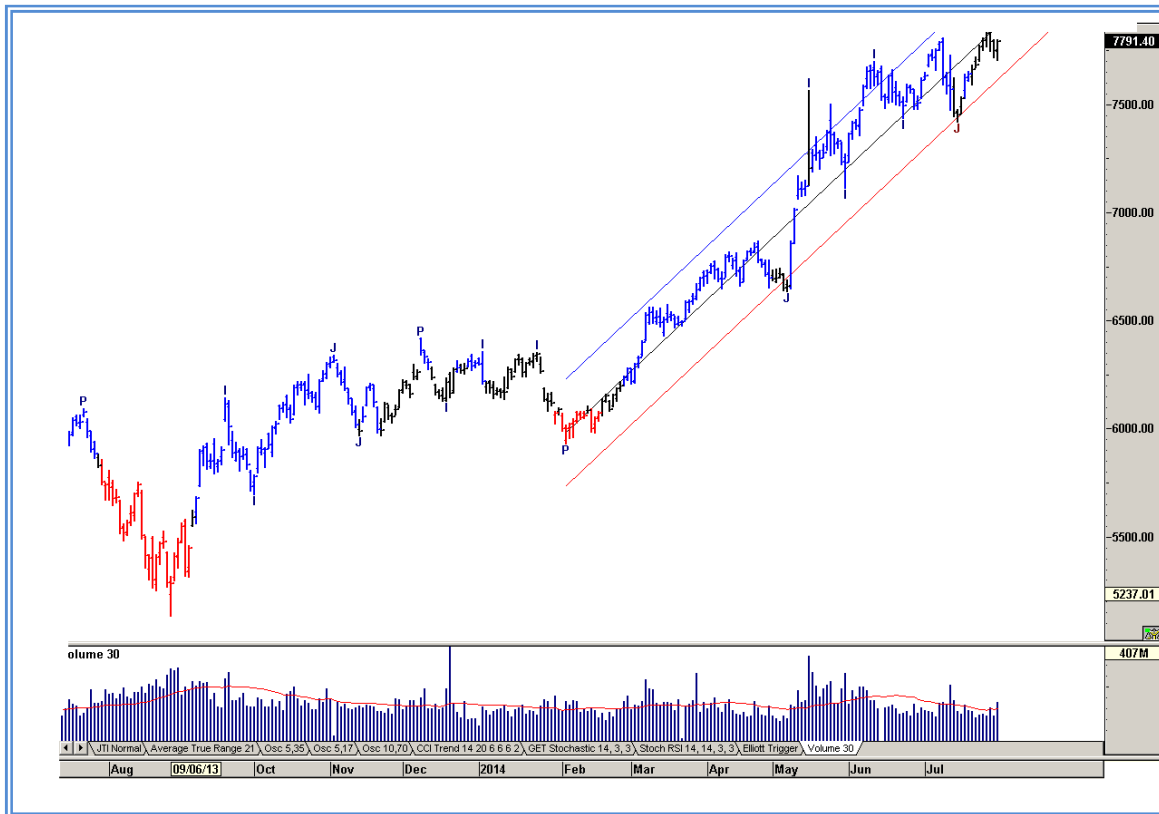
Top Gainers Weekly

Scrip	Price	% Chg
Aditya Birla Chemicals	260.00	28.78
BASF India	1260.75	28.19
Ahmednagar Forgings	322.60	16.93
Atlas Cycle Industries	294.05	16.43
Elder Pharmaceuticals	192.30	14.87

Top Losers Weekly

Scrip	Price	% Chg
Bhushan Steel	124.35	-18.46
BEML	544.85	-7.00
Edelweiss Financial Services	52.80	6.80
Jaiprakash Associates	51.85	6.24
Gammon India	31.30	6.15

Nifty Corner



Support & Resistance						
S3	S2	S1	Nifty	R1	R2	R3
7650	7750	7800	7913	7960	8050	8200
Moving Averages						
20DMA		50DMA		100DMA		200DMA
7755		7665		7335		6785

Market Commentary

Key benchmark indices edged higher in the week ended Friday. Positive global cues, softening of crude oil prices and speculation of an upward revision of India's sovereign rating outlook by global rating agency S&P underpinned sentiment. The market logged gains in four out of five trading sessions in the week just gone by. The BSE Mid-Cap and the BSE Small-Cap indices outperformed the Sensex during the week. In the week ended Friday, the 30-share S&P BSE Sensex gained 1.21%, its highest closing level since 19 August 2014. The barometer index, the S&P BSE Sensex scaled record high of 26,530 in intraday trade on Thursday, 21 August 2014. For next week nifty likely to trade in the range between 8050 – 8200 in the upper side and 7800 – 7750 in the lower side.

Stocks at 52 wk High

Scrip	Cmp
3M India	6041.50
Abbott India	2535.50
Aurobindo Phar	811.90
BPCL	672.00
Cipla	499.30

Stocks at 52 wk Low

Scrip	Cmp
Bhushan	124.40
C Mahendra Expo	57.05
Tilaknagar Ind	43.75
Dr Datson Labs	10.35
Panchsheel Org	19.70

FII Activity

Date	Figures in crore
18/08	473.42
19/08	559.39
20/08	251.36
21/08	412.77
22/08	302.06
Total	1999

DII Activity

Date	Figures in crore
18/08	490.04
19/08	-263.37
20/08	-481.37
21/08	63.74
22/08	-183.64
Total	-374.60

Weekly Stock Idea

Scrip	B/S	Cmp	Tgt
Maruti	B	2767	2820
Wipro	B	557	580
Kotakbank	B	1034	1075
Concor	B	1355	1420
Voltamp	B	699	775

Buy on dips & Sell on rise with Stop-loss of 3%

Volume Breakout Stocks

Scrip	Cmp
Rallis India	238.00
TTK Healthcare	713.20
Clariant	907.65
Andhra Sugar	154.35
Ramky Infra	63.90

Week Ahead

MAJOR RESULTS/AGM MEETING THIS WEEK:

25 Aug: SHREECEM, CAPLIPOINT, DATAMATICS

26 AUG: VTXIND, ZICOM, KRBL,

27 AUG: SPICEMOBI, ICSA, HCL-INSYS, ELDERPHARM, ZANDUREALT, ABIRLANUVO, MARUTI, JKLAKSHMI, CENTEXT, CENTURYPLY, GAIL

28 AUG: MANINFRA, CHAMBLFERT, COALINDIA,

VISIT US AT: WWW.INDIRATRADE.COM

Disclaimer

This report is for private circulation within the Indira Group. This report is strictly confidential and for information of the selected recipient only and may not be altered in any way, transmitted to, copied or distributed, in part or in whole, to any other person or to the media or reproduced in any form. This report should not be construed as an offer or solicitation to buy or sell any securities or any interest in securities. It does not constitute a personal recommendation or take into account the particular investment objectives, financial situations, or any such factor. The information, opinions estimates and forecasts contained here have been obtained from, or are based upon, sources we believe to be reliable, but no representation of warranty, express or implied, is made by us to their accuracy or completeness. Opinions expressed are our current opinions as of the date appearing on this material only and are subject to change without notice.